

February 2012

RENEWABLE ENERGY AT LAST

Right from the beginning we wanted our shop to be as green as possible, including the use of renewable energy. In December we finally managed to install the long-planned array of 72 solar panels up on the hillside behind the shop, concealed in a 'haha' ditch to preserve important views. Soon the grass will grow back to cover the bare earth.



The panels are now connected and generating electricity for the shop, at a favourable feed-in tariff. We hope to provide an information panel above the fruit & veg rack in the shop to illustrate the scheme and to incorporate a live numerical display showing just how much electricity is being generated at any one time. Yes, it works in winter, too! The meter already shows 600+ kWh.

The scheme is being financed by local investors who will be receiving a good return on their money but need to commit for 25 years. There is still room for more investors. See <http://galleriesshop.co.uk/news/> for more information.

NOW ON OUR SHOP WALLS

We have an intriguing display of paintings by Sonia Follows on our walls – complete with a quiz asking you to pair the 12 paintings with a list of clichés they illustrate. They will be with us until the middle of February. There-after it will be the turn of [Janet Coles](#) from Widcombe whose large brightly coloured cards we sell in the shop.



MEET HOLLY - OUR NEW APPRENTICE



Holly Barton who comes from Frome joined us just before Christmas – for a year of learning and doing, working towards her NVQ qualification. She picked up working the till, placing orders and re-stocking the shelves very quickly and is willing to turn her hand to any task including weeding our herb garden. She has already proven a great help to manager Christine who was feeling more and more pressured by the

demands of an ever busier shop.

Christine has just recently moved into a lovely old cottage in Holt.

MOBILE LIBRARY AT RISK



Do you use the mobile library that stops outside the shop every other Thursday afternoon? It is under threat! If you wish it to stay please make your views known to Bath & NE Somerset Council [here](#) or write directly to [Cllr Dave Dixon](#) who is responsible for this service, before 10th Feb.

Did you know there's also a Wiltshire mobile library which visits Limpley Stoke (Midford Lane) on alternate Thursday mornings?

GOOD NEWS FOR THE READY MEAL FANS



We now stock a new range of delicious ready meals: [Yumble Crumbles!](#) Savoury varieties include Ay Carumble Pork; Campfire

Crumble; Giddy Goat and Squashed Walnuts Crumble; Chook Crumble; some fish and several vegetarian options; and a great variety of sweet crumbles, too.

We discovered them at the Bath Farmers Market but they are made in Frome. Most come in portions for two or four people. We keep them in the freezer. Many volunteers have tried them and love them!



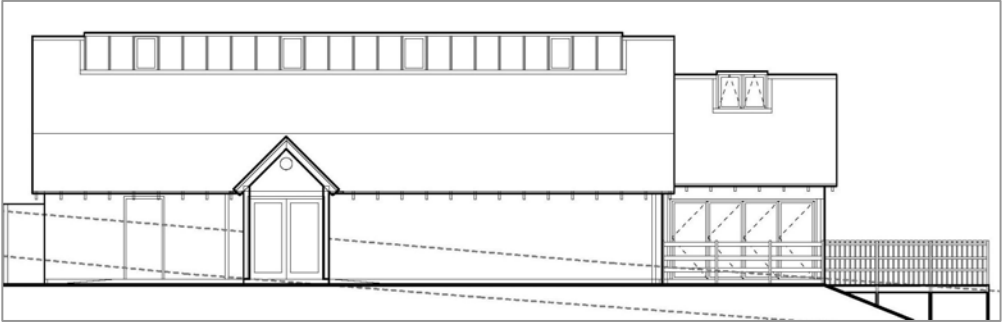
SHOP GIFT VOUCHERS – THE EASY GIFT!

Stuck for a present for someone local who has everything? Make it a gift voucher for the shop – especially if it's someone who has yet to discover shopping with us!

Shop gift vouchers are available in any denomination from £5 to £50 – and we can even personalise them for you.



DO WE WANT MORE CAFÉ SPACE?



Village SOS is an exciting joint initiative by the Big Lottery Fund and the BBC to launch a rural revival. There are grants to inspire people to start - or build up - community businesses that will breathe life into their areas and create jobs.

When we opened the shop, the café was merely a small sideline. Now it's often overcrowded - and our tiny kitchen corner makes it difficult to offer a varied menu. Our terrace is great but not when it rains ...

So wouldn't it be nice if we had more under-cover space for all weathers? Space for food preparation, and for a small children's toy corner? Space for enough customers so we could pay someone to work the unsocial weekend hours?

We think so - and thought this opportunity too good to pass up! So we've commissioned a simple planning application (see picture above), without which our grant application would not be valid.

This need not be the final shape of it. Your views welcome! Would you like to see more café space? Would you like the café to be open weekend lunch times and afternoons? Do you like the idea of a small separate room that could be used for meetings or small celebrations after hours? Please complete one of the forms in the shop! **We need your views very soon**, though - the funding application has to go in **by 1st February**.

WARMER CAFÉ

We have found a way to make our chiller-cooled café warm again - by guiding the hot air our chillers disperse to the outside back into the shop space. This is now operational - thanks to the genius and skill of Peter Davis who has built a great structure at the back of the shop to make this very green solution happen. **Thank you Peter!**



SPECIAL CHRISTMAS ORDERS

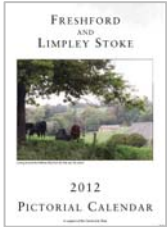
We took special turkey and other meat orders to the value of **£1450** this Christmas. Thank you for trusting us to get you what you need!

REMINDER: PLEASE ORDER AHEAD

Help the shop and yourself by placing advance orders! We can then be sure we have for you what you want – and keep our waste down. Order your Saturday Bertinet bread on Friday; your weekend meat on Wednesday; your store-baked bread or croissants any time. Try us also on a large quantity of vegetables or anything else. But give us a phone number in case of any problems!



FRESHFORD AND LIMPLEY STOKE CALENDAR 2013



To make the popular Freshford and Limpley Stoke calendar which Bridget Baker produces each year still more of a community product, Bridget is now opening this up to include photos from anyone depicting some aspect of village life or the local environment. A small committee will make the final selection and photographers will be credited.

Please email your photos to bridget.baker@virgin.net with a short caption. The printed pictures will be 17cm x 11.5 cm. We look forward to seeing your photos!

SOME LOCAL EVENTS WE KNOW OF

Tue 7th Feb 7pm	"Butterfly Conservation in Dorset" (Freshford Horticultural Society) - Freshford Village Hall
Tue 7th Feb 7pm	Limpley Stoke Parish Council meeting - Limpley Stoke Village Hall
Mon 13th Feb 7.30 pm	Freshford Parish Council meeting - Freshford VH
Thur 16th Feb 9-5 pm	Community Planning Workshop for the Parishes of Freshford and Limpley Stoke - Freshford Village Hall
Fri 17th Feb 7.30 pm	Feedback meeting from workshops – Freshford VH
Sat 3rd March 11-3pm	Archaeology for All: identify your find – Freshford VH
Sat 3rd March 7.30 pm	Dinner and Auction of Promises – Pre-school and School – Freshford VH

GALLERIES SHOP AND CAFÉ

Freshford Lane, Freshford, Bath BA2 7UR

T 723249 - **E** manager@galleriesshop.co.uk **W** www.galleriesshop.co.uk

OPENING HOURS

Shop and café: Monday-Friday 8-6, Saturday 8.30-12.30, Sunday 9-12.30.

Post Office: Tuesdays and Fridays 9-1